



Bulk Welding Cable

Part No. Black	Ft.	Ga.	Stranding	O.D.	Amps	Std/Pkg	Wt. M
WC6-50	25 ft	6 ga	266/.0100	.340	90	coil	128
WC6A-50	100 ft					spool	
WC6X-50	500 ft					spool	
WC4-50	25 ft	4 ga	420/.011	.380	120	coil	178
WC4A-50	100 ft					spool	
WC4X-50	500 ft					spool	
WC2-50	25 ft	2 ga	665/.0100	.440	240	coil	263
WC2A-50	100 ft					spool	
WC2X-50	500 ft					spool	
WC1-50	25 ft	1 ga	836/.0100	.530	300	coil	344
WC1A-50	100 ft					spool	
WC1X-50	500 ft					spool	
WC0-50	25 ft	1/0 ga	1064/.0100	.580	350	coil	424
WC0A-50	100 ft					spool	
WC0X-50	250 ft					spool	
WC00-50	25 ft	2/0 ga	1323/.0100	.615	450	coil	512
WC00A-50	100 ft					spool	
WC00X-50	250 ft					spool	

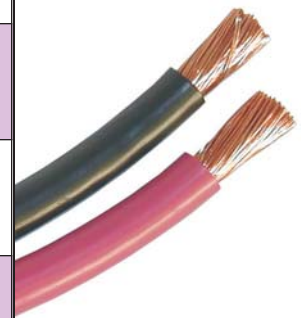
Mize Wire Welding Cable is one of the finest welding cables on the market today. It is designed to stay flexible at temperatures of -40°C , yet performs in the hottest climates. This fact, along with the 600 volt insulation, which has good abrasion and oil resistance, makes our welding cable a fine candidate for all welding cable applications.



Bulk Battery Cable

Part No. Black	Part No. Red	Ft.	Ga.	Stranding	O.D.	Ins. Wall	Temp Rate	Std/Pkg	Wt./M
BC6-50	BC6-10	25 ft	6 ga	49/.0226	.301	.060	80°C 176°F	coil	137
BC6A-50	BC6A-10	100 ft						spool	
BC6X-50	BC6X-10	500 ft						spool	
BC4-50	BC4-10	25 ft	4 ga	76/.0226	.356	.065	80°C 176°F	coil	168
BC4A-50	BC4A-10	100 ft						spool	
BC4X-50	BC4X-10	500 ft						spool	
BC2-50	BC2-10	25 ft	2 ga	126/.0226	.420	.065	105°C 221°F	coil	258
BC2A-50	BC2A-10	100 ft						spool	
BC2X-50	BC2X-10	500 ft						spool	
BC1-50	BC1-10	25 ft	1 ga	156/.0226	.453	.065	80°C 176°F	coil	322
BC1A-50	BC1A-10	100 ft						spool	
BC1X-50	BC1X-10	500 ft						spool	
BC0-50	BC0-10	25 ft	1/0 ga	133/.274	.525	.065	80°C 176°F	coil	431
BC0A-50	BC0A-10	100 ft						spool	
BC0X-50	BC0X-10	500 ft						spool	
BC00-50	BC00-10	25 ft	2/0 ga	133/.0315	.579	.065	80°C 176°F	coil	497
BC00A-50	BC00A-10	100 ft						spool	
BC00X-50	BC00X-10	500 ft						spool	

Mize Wire Battery Cable is flexible stranded copper with an insulated PVC jacket, 60 volt maximum, conforms to SAEJ1128 specifications. ROHS Compliant.



Spooled G.P.T. Primary Wire



Quality: Manufactured with the highest quality standard copper wire with a tough PVC jacket.

Performance: Conforms to J1128 automotive specifications. 80°C and 50 volt insulation.

Selection: 6 wire gauge sizes in 10 different colors. Available in a variety of spooled quantities.

Ga.	Conductor Stranding	Insulator Thickness	Diameter O.D.	Wt./M
18 ga	16/30 ga	.023	.092	7 lbs
16 ga	19/29 ga	.023	.103	10 lbs
14 ga	19/27 ga	.023	.117	16 lbs
12 ga	19/25 ga	.023	.141	24 lbs
10 ga	19/23 ga	.023	.173	38 lbs
8 ga	19/21 ga	.023	.215	61 lbs

Gauge	Spool Length	Red Part No.	Blue Part No.	Green Part No.	Yellow Part No.	Black Part No.	Brown Part No.	White Part No.	Purple Part No.	Orange Part No.	Gray Part No.
18	100	GP118A-10	GP118A-20	GP118A-30	GP118A-40	GP118A-50	GP118A-60	GP118A-70	GP118A-80	GP118A-90	GP118A-99
	500	GP118X-10	GP118X-20	GP118X-30	GP118X-40	GP118X-50	GP118X-60	GP118X-70	GP118X-80	GP118X-90	GP118X-99
	1000	GP118M-10	GP118M-20	GP118M-30	GP118M-40	GP118M-50	GP118M-60	GP118M-70	GP118M-80	GP118M-90	GP118M-99
	11000	GP118W-10	GP118W-20	GP118W-30	GP118W-40	GP118W-50	GP118W-60	GP118W-70	GP118W-80	GP118W-90	GP118W-99
16	100	GP116A-10	GP116A-20	GP116A-30	GP116A-40	GP116A-50	GP116A-60	GP116A-70	GP116A-80	GP116A-90	GP116A-99
	500	GP116X-10	GP116X-20	GP116X-30	GP116X-40	GP116X-50	GP116X-60	GP116X-70	GP116X-80	GP116X-90	GP116X-99
	1000	GP116M-10	GP116M-20	GP116M-30	GP116M-40	GP116M-50	GP116M-60	GP116M-70	GP116M-80	GP116M-90	GP116M-99
	9000	GP116W-10	GP116W-20	GP116W-30	GP116W-40	GP116W-50	GP116W-60	GP116W-70	GP116W-80	GP116W-90	GP116W-99
14	100	GP114A-10	GP114A-20	GP114A-30	GP114A-40	GP114A-50	GP114A-60	GP114A-70	GP114A-80	GP114A-90	GP114A-99
	500	GP114X-10	GP114X-20	GP114X-30	GP114X-40	GP114X-50	GP114X-60	GP114X-70	GP114X-80	GP114X-90	GP114X-99
	1000	GP114M-10	GP114M-20	GP114M-30	GP114M-40	GP114M-50	GP114M-60	GP114M-70	GP114M-80	GP114M-90	GP114M-99
	6000	GP114W-10	GP114W-20	GP114W-30	GP114W-40	GP114W-50	GP114W-60	GP114W-70	GP114W-80	GP114W-90	GP114W-99
12	100	GP112A-10	GP112A-20	GP112A-30	GP112A-40	GP112A-50	GP112A-60	GP112A-70	GP112A-80	GP112A-90	
	500	GP112X-10	GP112X-20	GP112X-30	GP112X-40	GP112X-50	GP112X-60	GP112X-70	GP112X-80	GP112X-90	
	1000	GP112M-10	GP112M-20	GP112M-30	GP112M-40	GP112M-50	GP112M-60	GP112M-70	GP112M-80	GP112M-90	
	4500	GP112W-10	GP112W-20	GP112W-30	GP112W-40	GP112W-50	GP112W-60	GP112W-70	GP112W-80	GP112W-90	
10	100	GP110A-10	GP110A-20	GP110A-30	GP110A-40	GP110A-50	GP110A-60	GP110A-70			
	500	GP110X-10	GP110X-20	GP110X-30	GP110X-40	GP110X-50	GP110X-60	GP110X-70			
	1000	GP110M-10	GP110M-20	GP110M-30	GP110M-40	GP110M-50	GP110M-60	GP110M-70			
	3500	GP110W-10	GP110W-20	GP110W-30	GP110W-40	GP110W-50	GP110W-60	GP110W-70			
8	100	GP108A-10				GP108A-50					
	500	GP108X-10				GP108X-50					
	2500	GP108W-10				GP108W-50					



Spooled Parallel Primary Wire

Part No.	Length	Ga.	Stranding	Diameter	Wt./M
216A	100 ft	2-16	19/29	.103	26
216X	500 ft	2-16	19/29	.103	26
316A	100 ft	3-16	19/29	.103	39
316X	500 ft	3-16	19/29	.103	39
416A	100 ft	4-16	19/29	.103	52
416X	500 ft	4-16	19/29	.103	52
214A	100 ft	2-14	19/27	.124	65
214X	500 ft	2-14	19/27	.124	65
414A	100 ft	4-14	19/27	.120	83
414X	500 ft	4-14	19/27	.120	83



Mize Wire Parallel Primary Wire is two, three or four primary wires bonded together for ease in handling. Mize wire is color coded for identification. The wires are easily separated.

Standard Colors

2 Wire: Red and Black

3 Wire: Green, Yellow and Brown

4 Wire: Green, Yellow, White and Brown

Standard and Heavy Duty Speaker Wire

Part No.	Ga.	Ft.	Wt./M
Standard Speaker Wire			
18-2A	2-18	100	30
18-2X	2-18	500	30
Heavy Duty Speaker Wire			
16-2A	2-16	100	44
16-2X	2-16	500	44
14-2A	2-14	100	65
14-2X	2-14	500	65



Mize Wire twin speaker wire is marked for polarity.

Duplex Parallel Primary Wire

Part No.	Length	Ga.	Stranding	Wt./M
B216A	100 ft	2-16	19/.0112	45 lbs
B216	250 ft			
B216W	1500 ft			
B214A	100 ft	2-14	19/.0140	60 lbs
B214	250 ft			
B214W	1500 ft			
B212A	100 ft	2-12	19/.0177	80 lbs
B212	250 ft			
B212W	1500 ft			



Duplex Parallel Primary Wire is made with one black and one white insulated primary wire laid parallel and covered with a high quality PVC jacket.

Mize Wire G.P.T. "Jiffy Spools"

Mize Wire Jiffy Spools are G.P.T. primary wire on graduated length spools. Each spool sells for the same price.



Gauge	Spool Length	Red Part No.	Blue Part No.	Green Part No.	Yellow Part No.	Black Part No.	Brown Part No.	White Part No.	Purple Part No.	Orange Part No.	Gray Part No.
18	45 ft.	118J-10	118J-20	118J-30	118J-40	118J-50	118J-60	118J-70	118J-80	118J-90	118J-99
16	35 ft.	116J-10	116J-20	116J-30	116J-40	116J-50	116J-60	116J-70	116J-80	116J-90	116J-99
14	25 ft.	114J-10	114J-20	114J-30	114J-40	114J-50	114J-60	114J-70	114J-80	114J-90	114J-99
12	15 ft.	112J-10	112J-20	112J-30	112J-40	112J-50	112J-60	112J-70	112J-80	112J-90	
10	10 ft.	110J-10	110J-20	110J-30	110J-40	110J-50	110J-60	110J-70			

Jiffy Spool Assortments

Mize Wire Jiffy Spool Assortments are sold by the box.

Part No.	Ga.	Qty / Pkg	Description
JS12	Assorted	12 spools	Assorted Colors and Gauges
118J-12	18	12 spools	Assorted Colors / 45 ft per spool
116J-12	16	12 spools	Assorted Colors / 35 ft per spool
114J-12	14	12 spools	Assorted Colors / 25 ft per spool
112J-12	12	12 spools	Assorted Colors / 15 ft per spool
110J-12	10	12 spools	Assorted Colors / 10 ft per spool



Jiffy Spool Rack Assortments



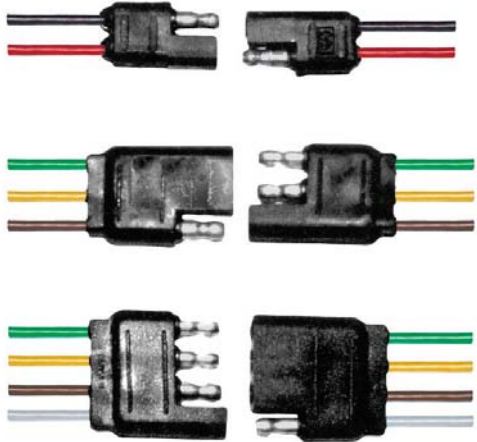
Mize Wire Jiffy Spool Rack consists of 36 Assorted Jiffy Spools in 5 gauges all in assorted colors. It also has one metal rack and one header card. Rack can sit on counter or be hung.

Part No. JS36



Flat Molded Trailer Connections

Mize Wire flat molded trailer connectors are made with 16 and 18 gauge wire. Color coded in accordance with S.A.E. specs. Can be used for automotive, marine or truck.



Part No.	Qty / Pkg	Description	Length	Gauge
FMT2-S	pkg/1	2 wire male & female	12"	18
FMT2-X	pkg/10	2 wire male & female	12"	18
FMT3-S	pkg/1	3 wire male & female	12"	16
FMT3-X	pkg/10	3 wire male & female	12"	16
FMT4-S	pkg/1	4 wire male & female	12"	18
FMT4-X	pkg/10	4 wire male & female	12"	18
FMT4M-S	pkg/1	4 wire male only	12"	18
FMT4M-X	pkg/10	4 wire male only	12"	18
FMT448M-S	pkg/1	4 wire male only	48"	18
FMT448M-X	pkg/10	4 wire male only	48"	18
FMT448F-S	pkg/1	4 wire, female only	48"	18
FMT448F-X	pkg/10	4 wire, female only	48"	18
FMT448-S	pkg/1	4 wire male & female	48"	16
FMT448-X	pkg/10	4 wire male & female	48"	16

Steel Frame Clips



Part No.	Qty / Pkg
FC316-X	pkg/10
FC316	pkg/100
FC316-K	pkg/1000



Part No.	Qty / Pkg
FC14-X	pkg/10
FC14	pkg/100
FC14-K	pkg/1000



Part No.	Qty / Pkg
FC38-X	pkg/10
FC38	pkg/100
FC38-K	pkg/1000

Flat Molded 4 Wire Harness Kit

Mize Wire Flat Connector Kit for 6, 12 and 24 volt application. Molded rubber flat 4-way connector with 25 ft of wire, 4 conductor lead wire color coded, 4 quick splicers and 4 butt connectors.



Part No. HK25-S

Pkg. of 1

Trailer Breakaway Switch

This trailer breakaway switch is designed for 12V DC. Comes with 4 ft. 16 ga. copper wire. PVC coated steel cable. For all trailers with electric brakes.



Part No.	Pkg / Qty
MZ-1TBS-S	pkg/1
MZ-1TBS-X	pkg/10
MZ-1TBS-MC	pkg/100

Trailer Cable

Mize Wire Round Trailer Cable is constructed of insulated multiple conductors, twisted and jacketed (PVC) to conform to ATA & SAE specifications, and is rated from -40°C to +80°C.

ABS=anti lock brake systems

Part No.	Length	Conductors	Ga.	Stranding	O.D.	Std/Pkg.	Color Code	Wt./W
C316P	25 ft	3 Conductor	16	19/.0112	.330	coil	3 conductor green, brown and yellow	66 lbs
C316PA	100 ft					coil		
C316PX	500 ft					spool		
C414P	25 ft	4 Conductor	14	19/.0140	.345	coil	4 conductor yellow, red, green and brown	160 lbs
C414PA	100 ft					coil		
C414PX	500 ft					spool		
C614P	25 ft	6 Conductor	14	19/.0140	.490	coil	6 conductor blue, black, brown, red, green and yellow	220 lbs
C614PA	100 ft					coil		
C614PX	500 ft					spool		
C712P	25 ft	7 Conductor	6-12 1-10	19/.0177	.640	coil	7 conductor, 10 ga white, 12 ga brown, blue, green, red, yellow and black	350 lbs
C712PA	100 ft					coil		
C712PX	500 ft					spool		
C7ABSPA	100 ft	7 Conductor	4-12 2-10 1-8	19/.0177 19/.0223	.670	coil	7 conductor, 8 ga white, 10 ga red & blue, 12 ga yellow, green, brown and black (jacket green)	440 lbs
C714P	25 ft	7 Conductor	14	19/.014	.670	coil	7 conductor red, white, brown, green yellow, blue and black	350lbs
C714PA	100 ft					coil		
C714PX	500 ft					spool		

Wiring Diagram Color Codes

Heavy Duty 7 Contact

No.	Color	Circuits	Recommended Wire Gauge	FMVSS 121 Anti Lock
1	White	Ground Return	10	8
2	Black	Clearance, Side Marker and Identification Lights	12	12
3	Yellow	Left Turn and Hazard Signal	12	12
4	Red	Brake lights and Anti-Lock Devices	12	10
5	Green	Right Turn Signal and Hazard Signal	12	12
6	Brown	Tail, Rear Clearance, Marker and License Plate Lights	12	12
7	Blue	Auxiliary Circuit	12	10

Universal 6 Contact

No.	Color	Circuits
1	Blue	Ground Return
2	Brown	Tail Lights
3	Yellow	Left Turn
4	Red	Stop
5	Green	Right Turn
6	Black	Auxiliary Circuit

Universal 4 Contact

No.	Color	Circuits
1	White	Ground Return
2	Black	Right Turn and Brake Lights
3	Red	Left Turn and Brake Lights
4	Brown	Tail Lights

Part No. C712 Series

7 Wire Black Jacket

Part No. C614 Series

6 Wire Black Jacket

Part No. C7ABS Series

**7 Wire Anti-Lock
Green Jacket**

Part No. C414 Series

4 Wire Black Jacket



4 Contact Trailer Connectors (Metal)

Mize Wire 4 contact trailer connectors are all die cast construction, rated at 35 amps, brass contacts with a molded interior. Made for 6, 12 or 24 volt applications. 3" hole center for mounting, interchanges with most popular brands.

Part No.	Qty / Pkg	Description
TC4C-S	pkg/1	4 contact unit male & female
TC4C-X	pkg/10	4 contact unit male & female
TC4M-S	pkg/1	4 contact male (trailer end)
TC4M-X	pkg/10	4 contact male (trailer end)
TC4F-S	pkg/1	4 contact female (car end)
TC4F-X	pkg/10	4 contact female (car end)



6 Contact Trailer Connectors (Metal)

Mize Wire 6 contact trailer connectors are all die cast, rated at 35 amps, with spring loaded self locking cover. Brass contacts with a molded interior. Made for 6, 12 or 24 volt applications, 3" hole center for mounting. Interchanges with most popular brands.

Part No.	Qty / Pkg	Description
TC6C-S	pkg/1	6 contact unit male & female
TC6C-X	pkg/10	6 contact unit male & female
TC6M-S	pkg/1	6 contact male (trailer end)
TC6M-X	pkg/10	6 contact male (trailer end)
TC6F-S	pkg/1	6 contact female (truck end)
TC6F-X	pkg/10	6 contact female (truck end)



7 Contact Trailer Connectors (Metal)

Mize Wire 7 contact connector, ATA approved, 40 amp rating. Heavy duty zinc die cast plug and socket. Interchanges with all ATA approved 7 contact connectors, with polarized round brass contacts. Spring loaded face plate locks plug in place and keeps out elements when not in use. Mounting holes 2-5/16" on center. Male connector comes with cable guard.

Part No.	Qty / Pkg	Description
TC7C-S	pkg/1	7 contact unit male & female
TC7C-X	pkg/10	7 contact unit male & female
TC7M-S	pkg/1	7 contact male (trailer end)
TC7M-X	pkg/10	7 contact male (trailer end)
TC7F-S	pkg/1	7 contact female (truck end)
TC7F-X	pkg/10	7 contact female (truck end)



7 Contact Blade RV Style Connectors (Metal)

Mize Wire 7 contact trailer connectors are all drawn steel, rated at 35 amps, with spring loaded self locking cover. Brass contacts with a molded interior. Made for 6, 12 or 24 volt applications, 3" hole center for mounting. Interchanges with most popular brands.

Part No.	Qty / Pkg	Description
TC7RV-S	pkg/1	7 contact unit male & female
TC7RV-X	pkg/10	7 contact unit male & female
TC7RVM-S	pkg/1	7 contact male (trailer end)
TC7RVM-X	pkg/10	7 contact male (trailer end)
TC7RVF-S	pkg/1	7 contact female (truck end)
TC7RVF-X	pkg/10	7 contact female (truck end)



Trailer Connector Adapters

All adapters are made of high impact and cold resistant material. This design allows for quick and simple adapting between most standard round and flat trailer connectors. Consult owners manual for correct adapter for your vehicle.

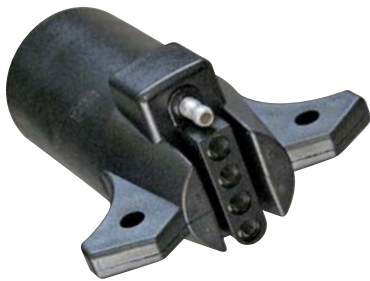


Part No.	Qty / Pkg	Description
TC6-4-S	pkg/1	6 pin to 4-flat adapter (converts 6 round pin connector "truck side" to accept a flat connector "FMT4/trailer side")
TC6-4-X	pkg/10	



Part No.	Qty / Pkg	Description
TC7RV-6AUX-S	pkg/1	7 blade to 6 round pin adapter (converts 7 blade connector "truck side" to accept a 6 pin connector "TC6M/trailer side") Auxiliary Pin in Center.
TC7RV-6AUX-X	pkg/10	
TC7RV-6BRK-S	pkg/1	7 blade to 6 round pin adapter (converts 7 blade connector "truck side" to accept a 6 pin connector "TC6M/trailer side") Brake Pin in Center.
TC7RV-6BRK-X	pkg/10	

Part No.	Qty / Pkg	Description
TC7RVDC-4-S	pkg/1	7 blade style to 4-flat adapter (converts 7 blade connector "truck side" to accept a 4-flat connector "FMT4/trailer side")
TC7RVDC-4-X	pkg/10	



Part No.	Qty / Pkg	Description
TC7RV-5-S	pkg/1	7 male blade to 5 way female flat.
TC7RV-5-X	pkg/10	

Part No.	Qty / Pkg	Description
TC7RVPF-S	pkg/1	Mize Wire 7 blade trailer connector is made of high impact and cold resistant material. This makes it a very durable connector. Brass contacts with molded interior. Made for 6, 12 and 24 volt applications. Interchanges with popular brands.
TC7RVPF-X	pkg/10	
TC7RVPM-S	pkg/1	
TC7RVPM-X	pkg/10	
TC7RVP-S	pkg/1	7 blade unit male/female for each
TC7RCP-X	pkg/10	7 blade unit male/female for each



F = Female M = Male

